



# PRESS RELEASE

**COMMUNITY DEVELOPMENT COMMISSION OF THE COUNTY OF LOS ANGELES**  
700 W. Main Street, Alhambra, CA 91801

For Immediate Release

Contact: Elisa Vásquez, (626) 586-1762, [Elisa.vasquez@lacdc.org](mailto:Elisa.vasquez@lacdc.org)

## **COUNTY OFFERS HOMELESS PATIENTS A CENTER FOR RECUPERATIVE CARE**

**New Facility Provides 38 Beds for Individuals Discharged From County  
Hospitals After Major Surgery**

East Rancho Dominguez, June 10,  
2015 - The Community Development  
Commission of the County of Los  
Angeles (CDC) joined Los Angeles  
County Supervisor Mark Ridley-  
Thomas to celebrate the grand  
opening of the South Los Angeles  
Recuperative Care Center (Center),



*From Left to Right: Gary Foster, Lamp Community Board Chair; Candace Benton, Center Director; Sean Rogan, CDC Executive Director; and Los Angeles County Supervisor Mark Ridley-Thomas.*

located in the unincorporated area of East Rancho Dominguez. The 38-bed Center will provide an environment for homeless patients to recover after major surgery, following discharge from County hospitals.

The CDC provided over \$1.8 million in County Homeless Prevention Initiative and Emergency Shelter Funds to rehabilitate the site. The Center will provide short-term housing, 24-hour nursing care and health oversight, case management, as well as housing

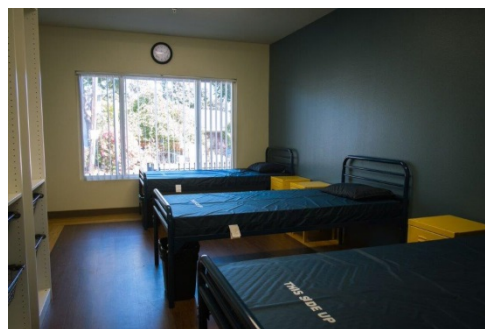
placement for homeless individuals. The average length of stay for homeless clients will be 30-60 days. The Center's goal is to stabilize patients recovering from acute illness, injuries, or conditions that would be exacerbated by living on the streets or in a shelter.



“All residents should have access to quality medical care following major surgery,” said Los Angeles County Supervisor Mark Ridley-Thomas. “In addition to providing specialized medical and recuperative care to homeless patients, the South Los Angeles

Recuperative Care Center will assist homeless individuals to find housing so that they can lead independent and healthy lives. These types of services are critical at a time when we have seen such a dramatic increase in homelessness in Los Angeles County.”

The Department of Health Services contracted with Lamp Community to operate the Center's programs. For over 28 years, Lamp Community has provided intensive services and housing to homeless and formerly homeless men and women who are living with chronic health conditions, mental illness, substance abuse, and co-occurring disorders.



For more information on the grand opening of the South Los Angeles Recuperative Care Center, please contact Kathrin Buschmann, Director of Development, Lamp Community, at (213) 488-9559, extension 109. All media may also contact Elisa Vásquez, Public Information Officer for the CDC, at (626) 586-1762.

###